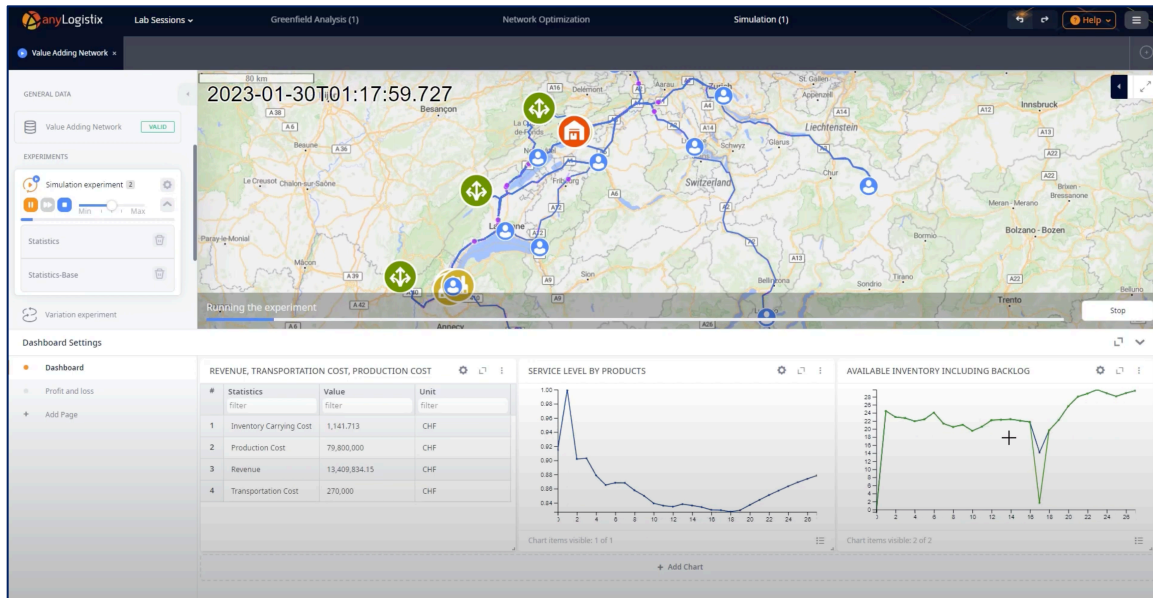




## Conducting What-If Scenario Analysis in anyLogistix: Video Guide & Learning Objectives



### 1. Before You Begin

- Watch this step-by-step guided video on YouTube: <https://youtu.be/ip-RWp9tkzw>
- For the best experience, enable **English subtitles** and adjust the video quality to **HD** in the YouTube settings.
- This video was created using an earlier version of anyLogistix. Some interface elements have been updated in later versions. These changes are minor, and the updated steps should still be intuitive. Key differences include:
  - The **welcome page**, project creation, and scenario import interfaces have been updated.
  - **Model selection** has moved from the top menu to the left-hand corner under the **“All types”** button.
  - The combined **“DCs and Factories”** data table is now split into two separate tables: **“Distribution Centers”** and **“Factories.”**
  - The interface for adding **charts and tables** to simulation results has been revised.



## 2. Purpose of the Video

This video demonstrates how to conduct what-if scenario analysis in anyLogistix using the previously developed watch manufacturing value-adding network. The goal is to analyze how different factors impact supply chain performance and to explore mitigation strategies. The video focuses on two key aspects:

- **Demand Fluctuation Impact:** Examining how variations in demand affect the service level of the supply chain.
- **Inventory Policy:** Running scenario analysis on inventory policies and parameters to determine how to mitigate the adverse effects of demand fluctuations on network performance.

## 3. Key Learning Points

By watching this video, you will learn:

- **What-If Scenario Analysis:** Understanding how to test different supply chain conditions and evaluate their impact.
- **Demand Fluctuation Impact:** Observing how changes in demand affect service levels, inventory availability, and overall network performance.
- **Inventory Policy Adjustments:** Testing various inventory policies (e.g., safety stock levels, reorder points) to find optimal settings for balancing cost and service level.
- **Decision Making:** Using simulation analytics to compare different scenarios and make data-driven decisions for supply chain resilience.

## 4. Exercise Questions

After watching the video and practicing the case, take some time to reflect on your learnings and answer the following questions. Be prepared to discuss your answers during the next lab session:

- **What-If Analysis:** What is the main difference between supply chain optimization and what-if scenario analysis? When should each approach be utilized?
- **Sourcing Policy Analysis:** Utilizing the established value-adding network, perform a what-if scenario analysis to assess the effects of various sourcing policies. How do different sourcing choices affect supply chain performance?
- **Custom Policies:** Not all potential supply chain policies are predefined in anyLogistix. What features does anyLogistix provide for users who want to implement their own custom policies?